



NMI

NIEHOFF Machine Interface

Expertise, Customer Driven, Service – in Good Hands with NIEHOFF



NMI

Advantages:

- standard user interface for all NIEHOFF machines and lines (designed together with machine operators)
- task and user-oriented structure – intuitive handling, the necessary operating controls and indicators are displayed appropriate to requirements (operating task/user level)
- simple and transparent navigation structure for quick operation
 - only two menu levels (main menu and tab system)
 - only two clicks to reach the required screen display
 - minimum training period for operators

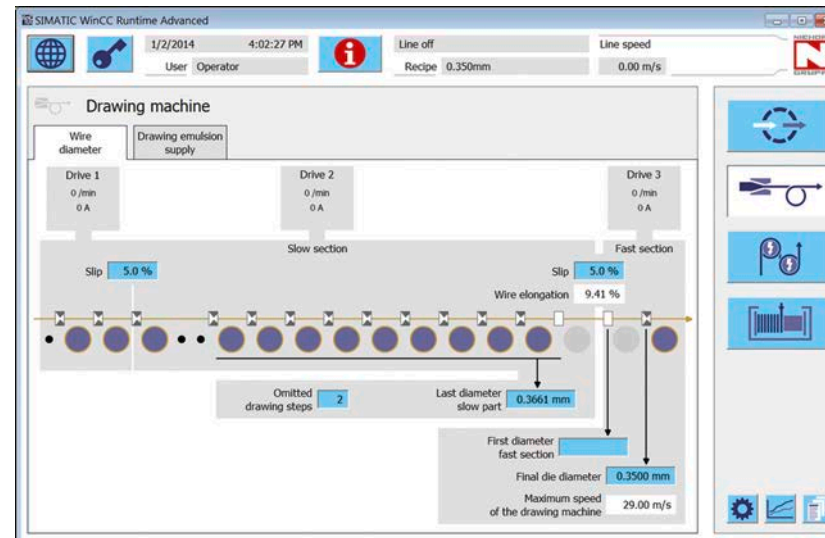
Features

- trend chart for process parameters with archiving function
- recipe data management
- access verification system for user groups
- data export and import via USB stick or memory card for recipe data, trend diagrams, message archive

- user manual for the machine as PDF document. Maintenance instructions available at the machine
- messaging system with historical data storage
- Online language switching
- Online unit switching (metric/inch)
- Diagnostic functions

Monitor screen

- Color touchscreen (without hardware keys)
- External memory card and USB interface
- Network-compatible (Ethernet)



We reserve the right to modify technical specifications according to technical improvement and advances. 03.2018